

Art & Antiques Guide

A guide to Paris' prestigious antique shops, art galleries and special shows

GENERAL INFORMATION

References at the end of each listing (A1, B5, etc.) apply to the coordinates on the map at the back of the magazine. The number after each address indicates its arrondissement, or district. Most galleries are open from about 11 a.m.-7 p.m. daily except Sun (and often Mon), and generally close for lunch.

ANTIQUE CENTERS & MARKETS

LOUVRE des ANTIQUAIRES (Le)—The largest gathering of antique dealers under one roof. 250 galleries covering over 30 specialties. Offering a wide selection of furniture, jewelry, paintings and art objects from primitive art to the early 20th century. Open Tues-Sat. 2, place du Palais Royal, 1st. T: 01.42.97.27.00. Map: E4. M: Palais Royal.

PUCES de SAINT-OUEN—Paris' largest and most well-known flea market. The items available range from used books and leather jackets to precious antique jewelry and Louis XVI furniture, in a series of different markets, some more upscale than others. For more info check out website www.antikita.com (in French). Open Sat-Mon. 142 rue des Rosiers, 94300 St. Ouen. Map: E1/F1. M: Porte de Clignancourt, then a 10-minute walk.

PUCES de VANVES—Open-air flea market on the av Marc Sangnier and av Georges-Lafenestre, 14th. The best time to find treasures is early Sat morning. Not as upscale as Saint-Ouen but just as fun, offering cutlery, candlestick holders and antique pastis bottles. Open Sat-Sun from 8 a.m. until around 1 p.m. Map: D7. M: Porte de Vanves.

ANTIQUE SHOPS

BERNARD STEINITZ—Specializes in 17th and 18th century furniture from Louis XIV to the Empire period. Chinese screens, European carpets, ornate appliqués. Open Mon-Sat. 9, rue du Cirque, 8th. T: 01.42.89.40.50. Map: D3. M: Champs-Élysées-Clémenceau.

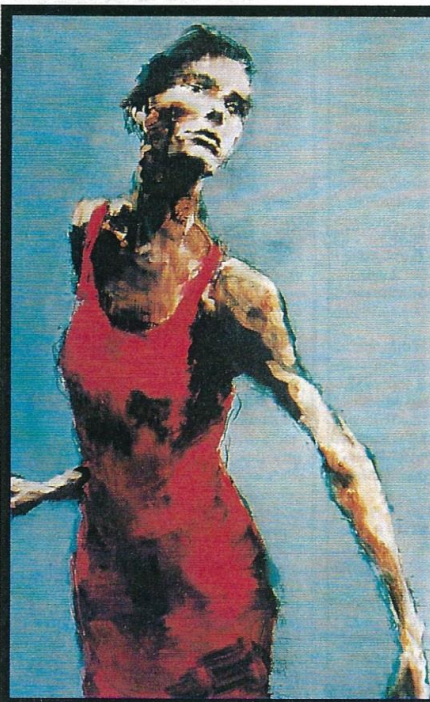


PHOTO © GALERIE ALAIN BIRONDEL

Through March 18 the Galerie Arcturus is showing recent work by German painter Gabriel Schmitz. Schmitz tends to paint melancholic portraits of women, and is inspired by what he calls the "gesticular grammar" of dance and movement.

65, rue de Seine, 6th.

T: 01.43.25.39.02.

Map: E4.

M: Saint-Germain-des-Prés.

Mon-Sat. 9, quai Voltaire, 7th. T: 01.42.61.82.06. Map: E4. M: rue du Bac.

GALERIE ROBERT FOUR—A wide selection of rugs and tapestries, including contemporary designs by Picasso, Delaunay, Toffoli and others, as well as

16th-20th century Aubusson tapestries. Open Mon-Sat. 8, rue des Saints-Pères, 7th. T: 01.40.20.44.96. Map: E4. M: Saint-Germain-des-Prés.

GALERIE de SOUZY—Specializing in 19th century antiques including paintings, *objets d'art*, furniture, sculpture and weaponry. Open Mon-Sat. 104, rue du Fbg Saint-Honoré, 8th. T: 01.42.65.90.96. Map: D3. M: Miromesnil.

PERRIN ANTIQUAIRES—Prestigious antique dealer. Currently featuring new acquisitions, including 18th century French decorative art. Open Mon-Sat. 98, rue du Fbg Saint-Honoré, 8th. T: 01.42.65.01.38. Map: D3. M: Miromesnil.

COMMERCIAL GALLERIES

ARTCURIAL—Recently re-opened at the Marcel-Dassault mansion, this gallery specializes in limited edition sculpture, carpets, furniture and jewelry by modern artists such as Man Ray, Etienne-Martin and Arman. Also includes an art and architecture bookshop. Open Tues-Sat. 61 av. Montaigne, 8th. T: 01.42.99.16.16. Map: D3. M: Champs-Élysées-Clémenceau.

HERITAGE ORIENTAL—Furniture, art and religious icons from the Far East, Burmese *objets d'art*, and Buddhas from numerous countries and time periods. Also a wide selection of 18th and 19th century furniture. Open Tues-Sat. 53, quai des Grand

Augustins, 6th. T: 01.56.24.37.94. Map: E4. M: Saint-Michel.

Tisseyre at the Galerie Fourtin.
See page 31.

GALERIE ARIANE DAN-DOIS—European and Asian antiques in a three-story space decorated with rare Greek marble. 92, rue du Fbg Saint-Honoré, 8th. Map: D3. M: Miromesnil.

GALERIE CAMOIN DEMACHY—An enormous, 6,500 square foot, multi-story gallery filled with French and European antiques from the 17th, 18th and 19th centuries. Open

